



Service Mind



AIR PRESSURE SERVICE CO., LTD.
WWW.APS-COMPRESSOR.COM

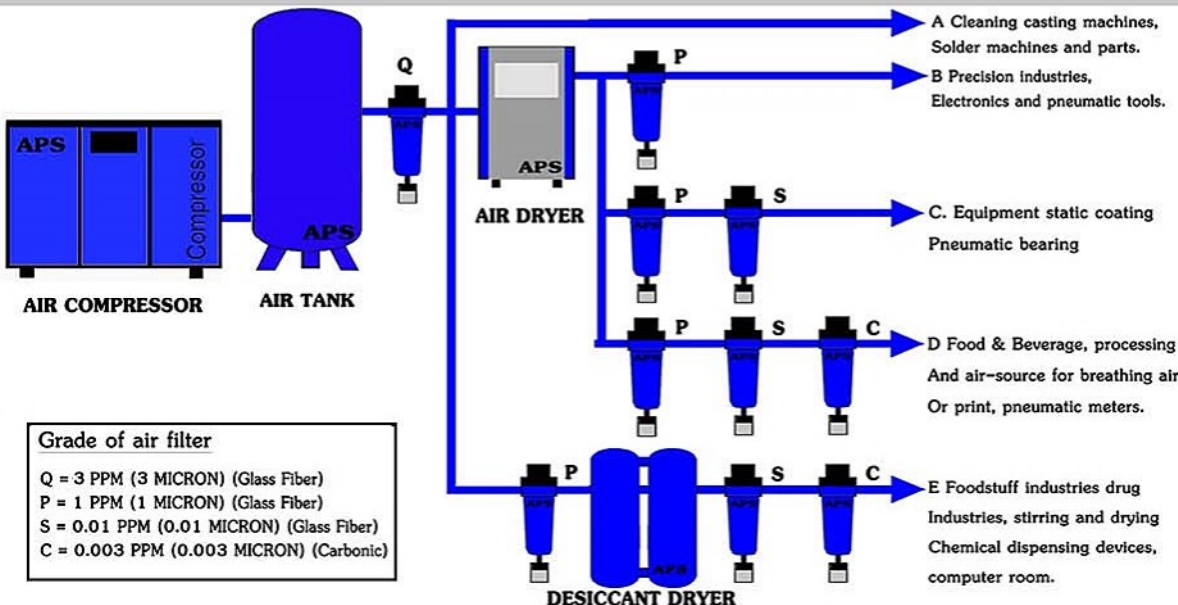


AIR PRESSURE SERVICE CO., LTD.

บริษัท แอร์ เพรสเซอร์ เซอร์วิส จำกัด

ได้ดำเนินการกิจการโดยมุ่งมั่นในการสร้างศักยภาพทางด้านทีมงานและการบริการ ซึ่งดำเนินการโดยทีมงานที่มีคุณภาพและมีประสบการณ์มากกว่า 10 ปี ทางด้านงานซ่อม และบำรุงรักษาเครื่องอัดอากาศระบบ โรตารี-สกรู (Screw), โรตารี-แวน (Vane), ระบบลูกสูบ (Piston) และ ระบบเครื่องทำความเย็น AHU, Chiller, Freezer Room และ งานระบบลมอุตสาหกรรมครบวงจร ซึ่งทางบริษัทฯ ได้เล็งเห็นความสำคัญและตระหนักดีว่าเครื่องอัดอากาศมีความสำคัญ และมีความจำเป็นในระบบสายการผลิตของโรงงานอุตสาหกรรม บริษัทฯ จึงได้คัดสรรอะไหล่ คุณภาพระดับ OEM (Original Equipment Manterial) ซึ่งเป็นที่ ยอมรับในระดับสากล จากหลากหลาย ประเทศ เช่น เยอรมัน อิตาลี และ สหรัฐอเมริกา เพื่อให้ลูกค้าเกิดความพึงพอใจและมั่นใจในสินค้า และบริการจากเรา

บริษัทฯ หวังเป็นอย่างยิ่งว่าข้อมูลแนะนำบริษัทเบื้องต้นนี้จะเป็นประโยชน์ในการตัดสินใจ เลือกใช้สินค้าและบริการจากเรา เพื่อประโยชน์สูงสุดแก่องค์กรของท่านต่อไป



PRODUCT PARTS

Rotary Vane Compressor



Spare Parts

- Separator elements
- Oil filters
- Air intake filters
- Separator felt pads
- Drive belts
- Gaskets and seals

Reconditioned Parts

- Air/Oil coolers refurbished
- Air end reconditioning

Service Kits

- Separator kits
- Filter kits
- Minimum pressure valve kits
- Check valve kits
- Oil stop valve kits
- Unloader valve kits
- Thermostatic valve kits
- Drain trap kits
- Air end mounting kits
- Air end rebuild kits

Rotary Screw Compressor



Spare Parts

- Separator elements
- Separator felt pads
- Bearings
- Pressure gauges
- Drive coupling pins
- Oil return valves
- Air intake filters
- Oil filters
- Seals and gaskets

Service Kits

- Oil change kits
- Service kits
- Separator kits
- Overhaul kits

Reconditioned Parts

- Air/Oil coolers repaired
- End covers refurbished
- Air ends reconditioned

Piston Compressor



Spare Parts

- Suction and delivery
- Valve assemblies
- Valve parts
- Piston rings
- Packings
- Piston rods
- Pistons
- Cylinder liners
- Bearings
- Scraper boxes

Service Kits

- Valve service kits
- Gasket and seal kits
- Maintenance kits
- Tune up kits
- Piston ring kits

Reconditioned Parts

- Valves reconditioned
- Valve conversions
- Inter and after coolers
- Reconditioned

PNEUMATIC



HYDRAULIC



PNEUMATIC

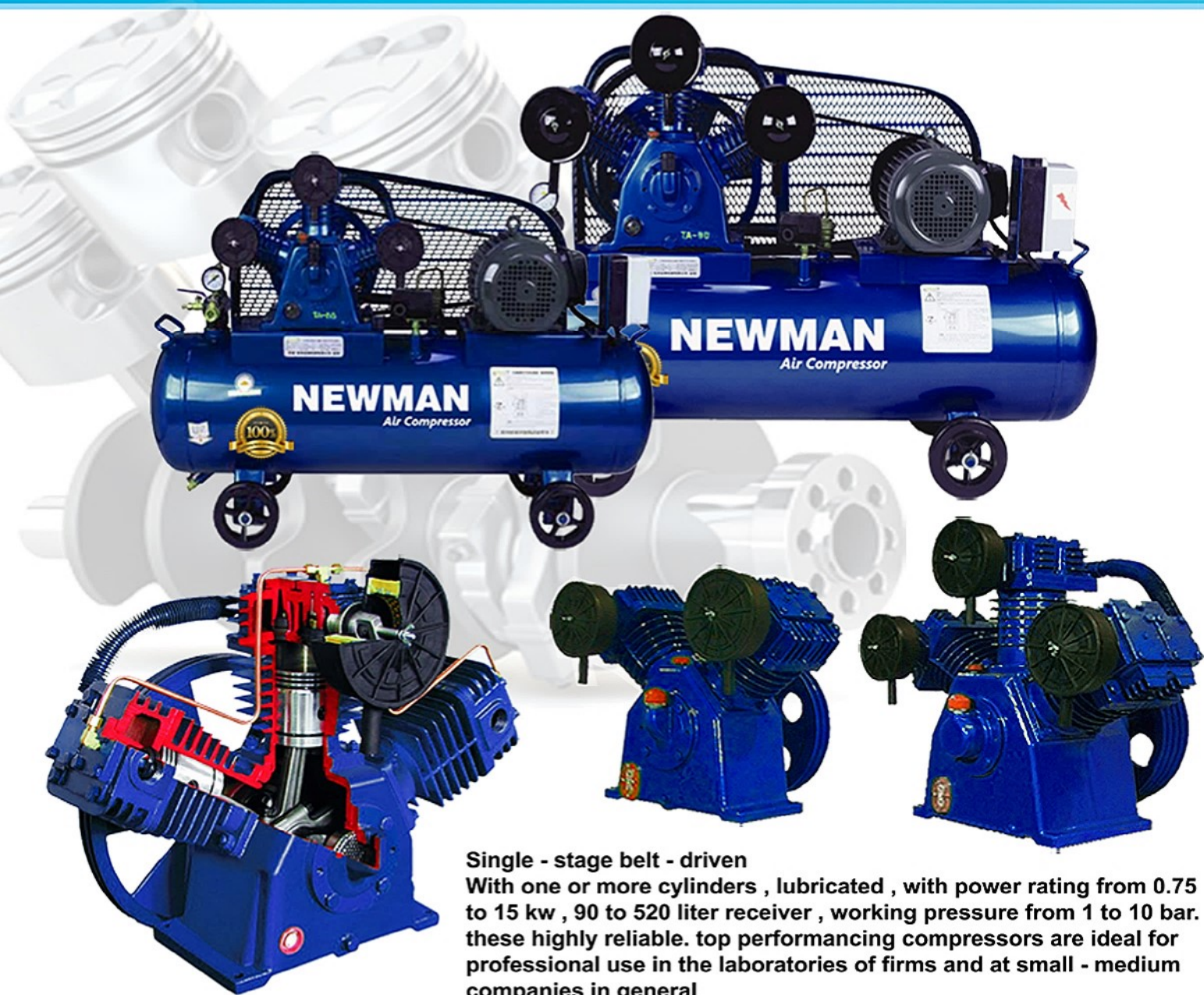
Tubes , Fittings , Solenoid Valve , Air Combination , Air Cylinder , Motor , Electrical , etc.

HYDRAULIC

Fittings , Valves , Gear Pumps , Cylinder , Pump , Annex , etc.

HEAVY DUTY INDUSTRY
RELIABLE QUALITY & LOW COST
FULL AFTER SALES SERVICE & SPARE PARTS

NEWMAN
Air Compressor



Single - stage belt - driven
 With one or more cylinders , lubricated , with power rating from 0.75 to 15 kw , 90 to 520 liter receiver , working pressure from 1 to 10 bar. these highly reliable. top performing compressors are ideal for professional use in the laboratories of firms and at small - medium companies in general

TECHNICAL DATA

SINGEL STAGE

MODEL	MOTOR		DISPLACMENT		WORKING PRESSURE		MAX		R.P.M	CYLINDER			AIR TANK	
	HP	KW	L/min	CFM.	Kg/cm ²	PSI	Kg/cm ²	AIR OUTLET		BORE (mm.)	STROKE (mm.)	NO.	Liters	SIZE (cm.)
VA-65	1	0.75	205	7.17	8	116	10	145	635	65	44	2	90	∅ 350 x 980
TA-65	2	1.5	310	10.85	8	116	10	145	635	65	48	3	150	∅ 400 x 1000
VA-80S	3	2.2	560	19.6	8	116	10	145	770	80	60	2	165	∅ 400 x 1130
VA-80	3	2.2	560	19.6	8	116	10	145	770	80	60	2	260	∅ 500 x 1100
TA-80S	5.5	4.0	900	31.5	8	116	10	145	900	80	60	3	260	∅ 500 x 1100
TA-80	5.5	4.0	900	31.5	8	116	10	145	900	80	60	3	315	∅ 500 x 1400
VA-100	7.5	5.5	1290	45.15	8	116	10	145	970	100	70	2	315	∅ 500 x 1400
TA-100	10	7.5	1790	62.65	8	116	10	145	970	100	70	3	315	∅ 500 x 1400
TA-120	15	11	2850	99.75	8	116	10	145	860	120	80	3	520	∅ 600 x 1510
TA-125	20	15	3167	110.84	8	116	10	145	800	155	116	4	520	∅ 600 x 1510

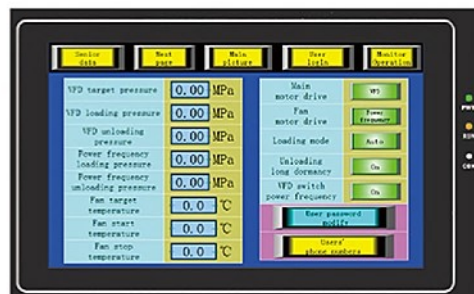
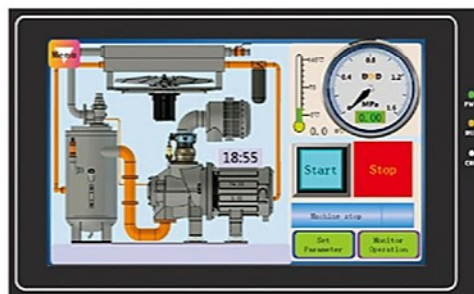


Remote Monitoring System



PC ports can show the dynamic running data of compressor and review history failure and warning.

Log in account through APP ports can track all information of compressor at any place at any time and so that you can take quick response to solve problem of compressor.



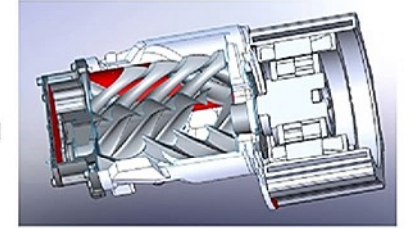
Airend technology :

Self developed rotor profile for maximum efficiency
Low wear bearing for high liability



Efficient aluminum alloy oil-cool motor

The applications of efficient Aluminum alloy Oil-cool motor in our air compressors are unique and first in this air compressor industry. With advantages of high efficiency(96% above) light-weight, fast-cooling, low noise(which can lower to 60-70dB(A)), our self-patented aluminum alloy oil-cooled motors dominate relevant product series (LS series, PM-TK series, EPM series) from average air compressors of competitors.



Technical Data

Model	Power KW	FAD(m ³ /min)				Driveway	Noise dB(A)	L*W*H mm	Weight kg	Outler Pipe inch
		7bar	8bar	10bar	12.5bar					
BD-10A	7.5	1.4	1.2	1	0.8	directdrive	62	960*580*770	178	1/2"
BD-15A	11	1.8	1.6	1.3	1	directdrive	64	1100*710*1100	286	1"
BD-20A	15	2.5	2.3	2	1.7	directdrive	64	1100*710*1100	327	1"
BD-30A	22	3.8	3.65	3.1	2.7	directdrive	64	1250*950*1120	500	1-1/4"
BD-40A	30	5.2	5	4.3	3.8	directdrive	65	1500*1000*1350	680	1-1/2"
BD-50A	37	6.5	6.3	5.5	4.9	directdrive	65	1500*1000*1350	683	1-1/2"
BD-60A	45	8	7.5	7	6	directdrive	67	1750*1150*1500	1038	2"
BD-75A	55	10.5	9.8	8.6	7.6	directdrive	67	1750*1150*1500	1038	2"
BD-100A	75	14.1	12.8	11.6	10	directdrive	68	1750*1150*1500	1200	2"
BD-125A	90	16	15	13.6	12.2	directdrive	68	1750*1150*1500	1500	2"
BD-150A	110	20.5	19	17.2	14.8	directdrive	70	2200*1500*1720	2000	DN65
BD-175A	132	24.1	22.9	20.5	16.8	directdrive	70	2200*1500*1720	2500	DN65
BD-200A	160	28.3	27	24.5	20.5	directdrive	72	3190*1890*1740	3900	DN80
BD-250A	185	32	30.5	28	24	directdrive	73	3190*1890*1740	4200	DN80
BD-300A	220	38.5	35.8	32.2	28.5	directdrive	73	3384*1894*1900	4600	DN100
BD-350A	250	43.8	41.4	37.8	33	directdrive	73	3384*1894*1900	5000	DN100

A series Fixed Speed Screw Air Compressor



EPM Series VSD Screw Air Compressor



Model	Power KW	Pressure bar	FAD (m ³ /min)	Driveway	Noise dB(A)	L*W*H mm	Weight kg	Outler Pipe inch
BD-7.5EPM	7.5	7-10	0.36-1.35	one-shaft	62±2	900*650*920	180	ZG1/2"
BD-11EPM	11	7-10	0.46-1.80	one-shaft	62±2	1020*710*1020	286	ZG1"
BD-15EPM	15	7-10	0.80-2.60	one-shaft	65±2	1250*800*1000	400	G1-1/4"
BD-22EPM	22	7-10	1.00-3.80	one-shaft	65±2	1250*800*1000	450	G1-1/4"
BD-30EPM	30	7-10	1.30-5.20	one-shaft	65±2	1450*900*1250	580	G1-1/2"
BD-37EPM	37	7-10	1.90-6.80	one-shaft	65±2	1450*900*1250	610	G1-1/2"
BD-45EPM	45	7-10	2.30-8.40	one-shaft	65±2	1600*1150*1370	900	G2"
BD-55EPM	55	7-10	3.00-11.00	one-shaft	68±2	1600*1150*1370	930	G2"
BD-75EPM	75	7-10	4.50-15.00	one-shaft	68±2	1800*1250*1550	1080	G2"
BD-90EPM	90	7-10	5.00-16.80	one-shaft	68±2	1900*1250*1650	1280	G2"
BD-110EPM	110	7-10	6.50-21.50	one-shaft	75±2	2200*1550*1800	2880	DN80
BD-132EPM	132	7-10	7.60-25.30	one-shaft	75±2	2200*1550*1800	3080	DN80
BD-160EPM	160	7-10	8.90-29.70	one-shaft	75±2	3184*1884*1740	3900	DN100
BD-185EPM	185	7-10	10.10-33.60	one-shaft	75±2	3184*2032*2000	4200	DN100
BD-220EPM	220	7-10	12.10-40.40	one-shaft	78±2	3420*2020*1900	4600	DN125
BD-250EPM	250	7-10	13.80-46.00	one-shaft	75±2	3420*2020*1900	5000	DN125

All-in-one Screw Air Compressor

Model	Power KW	Pressure bar	FAD (m ³ /min)	Driveway	Tank Volume (L.)	Noise dB(A)	L*W*H mm	Weight kg	Outler Pipe inch
PM7.5TK	7.5	8	1.2	directdrive	150 L.	65±2	1300*625*1410	450	1/2"
PM11TK	11	8	1.6	directdrive	300 L.	65±2	1300*625*1410	450	1"
PM15TK	15	8	2.3	directdrive	300 L.	67±2	1600*750*1600	500	1"
PM22TK	22	8	3.65	directdrive	400 L.	67±2	1600*750*1600	700	1-1/4"
PM11TK	11	16	0.97	directdrive	300 L.	65±2	1300*625*1410	450	1"
PM15TK	15	16	1.27	directdrive	300 L.	67±2	1600*750*1600	500	1"
PM18TK	18.5	16	1.8	directdrive	400 L.	67±2	1600*750*1600	600	1"
PM22TK	22	16	2.3	directdrive	400 L.	67±2	1600*750*1600	700	1"



NEWMAN BOD Series

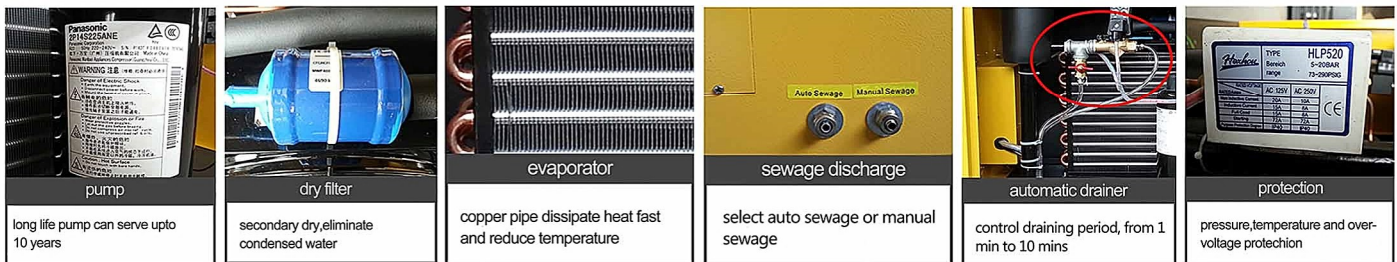
Air Dryer

High-Efficiency / High-Quality / High-Temperature



Working Condition and Technical Data

- Inlet Temperature: 2-80 °C
 - Ambient Temperature: 2-45 °C
 - Working Pressure: 2-13 bar
 - Max Pressure: 15 bar
 - Pressure Dew Point: 2-10 °C
 - Cooling Type: Air-Cooled
- Environmental-friendly
 - Sustainable and Efficient
 - Long Service Life
 - Low operation cost
 - Wide application



Professional Air Quality for protection of equipment & processes

The refrigerant dryers guarantee dry and qualitative compressed air which prolongs the lifetime of your equipment and ensures a superior production quality. Water vapour is eliminated, avoiding corrosion in your compressed air network and tools. All in all this lowers your maintenance costs and improves your overall production process for complete peace of mind.

Technical Data

Model	Air flow m³/min	Refrigerant	Electricity	Power	Dimension			W(KG)	Inlet/outlet
					L(mm)	W(mm)	H(mm)		
BD-10	1.8	R22	220V/50HZ	0.25HP	400	800	640	55	3/4"
BD-20	2.8	R22	220V/50HZ	0.5HP	400	800	780	65	1"
BD-30	3.8	R22	220V/50HZ	0.75HP	400	800	780	68	1"
BD-40	5.5	R22	220V/50HZ	1.25HP	500	960	880	90	1-1/2"
BD-60	6.8	R22	220V/50HZ	1.5HP	500	960	880	95	1-1/2"
BD-80	8.8	R22	220V/50HZ	2HP	700	1000	1000	130	2"
BD-100	11.5	R22	220V/50HZ	2HP	700	1000	1000	135	2"
BD-120	14	R22	380V/50HZ	2.5HP	700	1000	1000	160	2-1/2"
BD-150	16	R22	380V/50HZ	3HP	700	1000	1000	165	2-1/2"
BD-200	22.8	R22	380V/50HZ	5HP	700	1400	1160	250	3"
BD-250	28.5	R22	380V/50HZ	6HP	700	1400	1160	300	3"
BD-300	35	R22	380V/50HZ	7.5HP	1800	1000	1360	400	3"
BD-400	45	R22	380V/50HZ	8HP	2000	1000	1360	500	4"
BD-500	55	R22	380V/50HZ	10HP	2200	1100	1480	600	4"

NEWMAN

Filter

High-Efficiency / High-Quality

NEWseries

Compressed Air Line Filter

Standard reference conditions

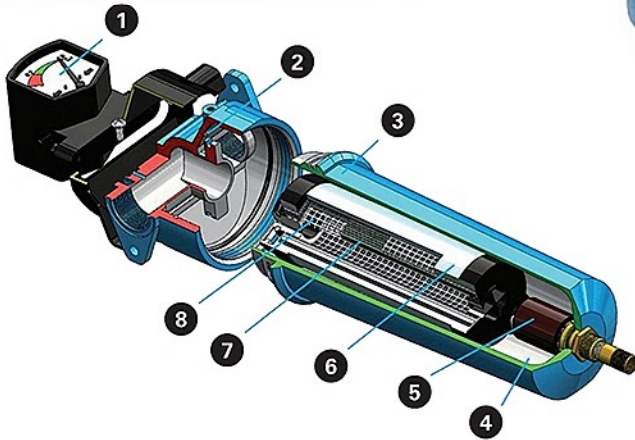
Rated working pressure : 1.3 Mpa

Maximun temperature of filter : 80 °C

Maximun temperature (Sterlization type) : 150 °C

Features :

- High quality: Adopting the most advanced technology of Germany to produce high-polymer-materail filter.
- Wide application: Filter of multiple level to remove oil, water, dust and bacteria.
- Stronger & lighter: Aluminum alloy shell, larger steel filter.



1. Differential pressure gauge
2. O-ring bowl seal
3. Diecasting aluminium housing chromated with polyester epoxy powder coating for corrosion resistance
4. Large capacity reservoir allow large condensate volume
5. Auto drain
6. Drainage layer
7. High efficiency filtration media
8. Support cylenders

P = 3 Micron (class 3 - ISO 8573-1)
M = 1 Micron dust/0,1 mg/ m oli (class 2-ISO8573-1)
H = 0,01 Micron dust /0,01 mg/m³ oil (class 1-ISO 8573-1)
C = 0,003 mg/m³ oil (class 1-ISO 8573-1)

Standard reference conditions

- Ambient Temperature	25 °C
- Working pressure	7 bar
- Inlet Air Temperature	20 °C

MAX working condition

- Inlet Air Temperature	100 °C
- Filter are equipped with auto-drain all models	

Degrees of filtration

Degrees of filtration	Filters
P Filtration by interception	For particles up to 3 micron. P is the degree specifically designed to remove of dust before and after the dryer
M Filtration by coalescence principle	Solid For particles up to 1 micron Oil For concentration up to 0,1 mg/m ³
H Filtration by coalescence principle	Solid For particles up to 0,01 micron Oil For concentration up to 0,01mg/m ³
C Filtration by adsorption process	Solid For particles up to 0,01 micron Oil Maximum concentration up to 0,003 mg/m ³

Model	Flow-Rate			Working pressure (Mpa)	Pipe diameter (Inch)	Dimension DxH(mm)	Element Model
	m3/min	l/min	cfm				
FGO.00034	0.57	567	20	1.0	1/2"	95x210	00034E
FGO.00077	1.28	1283	45	1.0	3/4"	95x210	00077E
FGO.00119	1.98	1983	70	1.0	3/4"	95x270	00119E
FGO.00170	2.83	2833	100	1.0	3/4"	95x270	00170E
FGO.00212	3.53	3533	125	1.0	1"	125x300	00212E
FGO.00306	5.10	5100	180	1.0	1-1/2"	125x300	00306E
FGO.00451	7.52	7517	265	1.0	1-1/2"	125x385	00451E
FGO.00629	10.48	10483	370	1.0	1-1/2"	125x385	00629E
FGO.00934	15.57	15567	550	1.0	2"	170x505	00934E
FGO.01325	22.08	22083	780	1.0	2"	170x690	01325E
FGO.01800	30.00	30000	1059	1.0	2-1/2"	200x980	01800E
FGO.02176	36.25	36250	1281	1.0	3"	200x980	02176E
FGO.02805	46.75	46750	1650	1.0	3"	200x980	02805E

Over-Haul

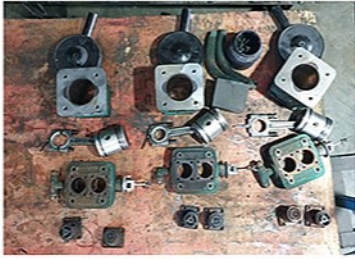
Screw



Portable



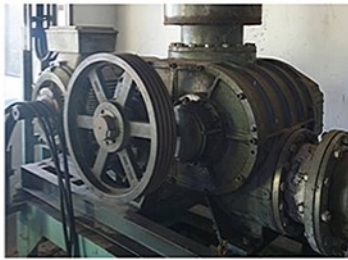
Piston



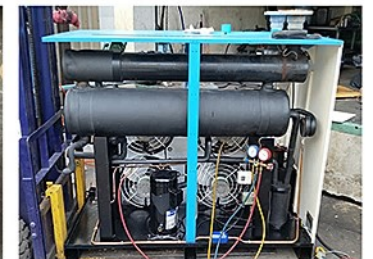
Motor



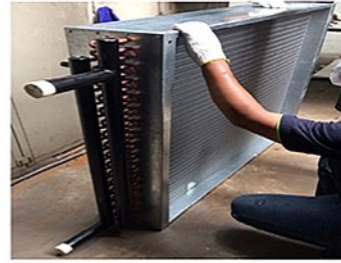
Blower



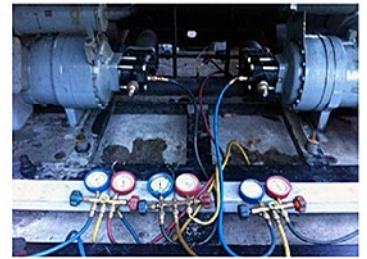
Air Dryer



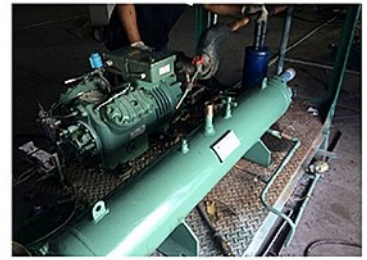
AHU



Chiller



Freezer Room



Desiccant Dryer



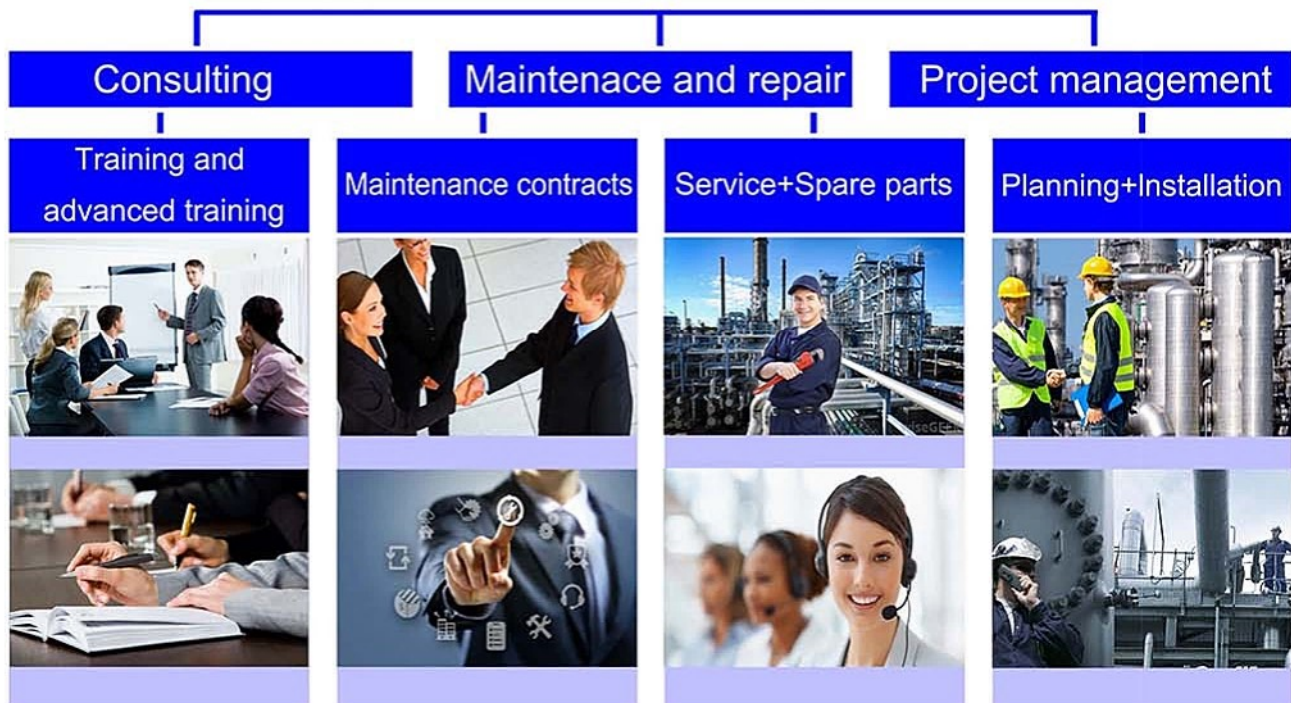
Nitrogen Generators



Air Tank



SERVICES



บริษัท แอร์ เพรสเซอร์ เซอร์วิส จำกัด
AIR PRESSURE SERVICE CO., LTD.

สำนักงานใหญ่ 28/2 ซอยเทียนทะเล 25 ถนนบางขุนเทียน-ชายทะเล แขวงท่าข้าม
เขตบางขุนเทียน กรุงเทพมหานคร 10150

HEAD OFFICE 28/2 Soi Tientalay 25, Bangkhuntien-Chaytalay Road, Thakam,
Bangkhuntien, Bangkok 10150

Tel : 02-453-9368 / Fax : 02-453-9369

E-mail : aps-compressor@hotmail.com